

GENERAL NOTES

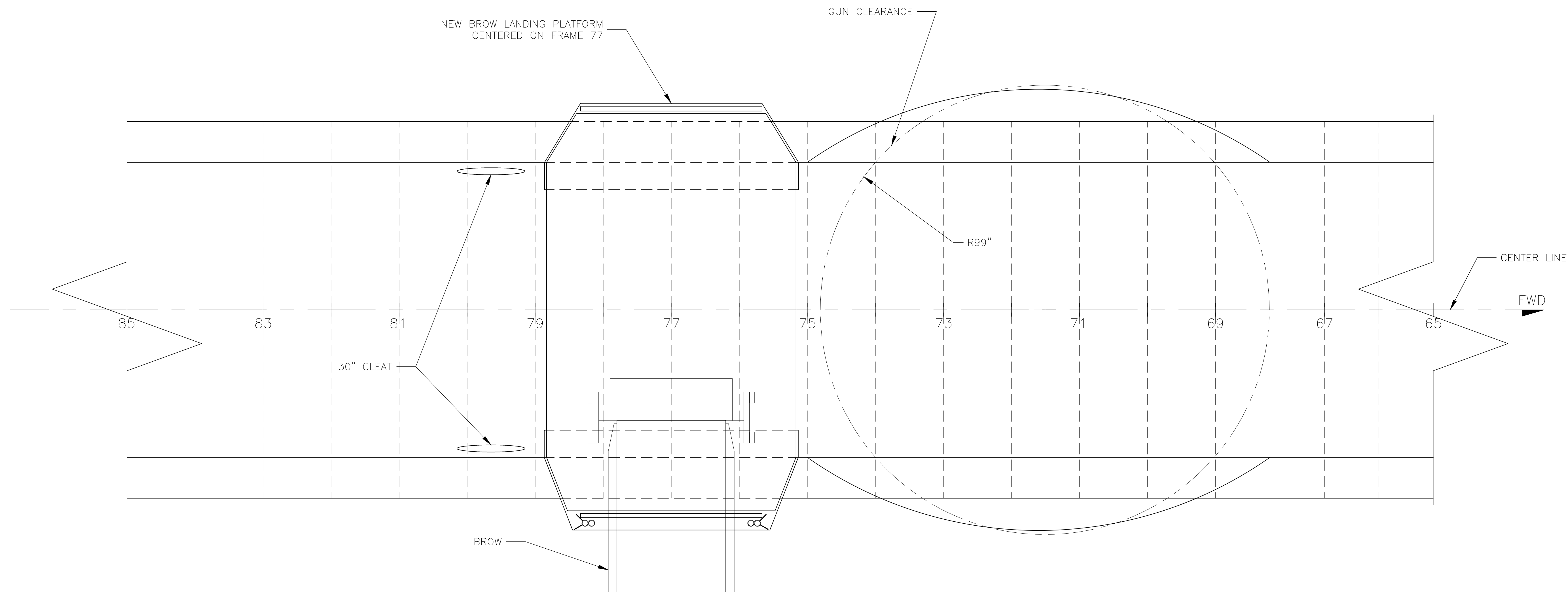
1. THIS DRAWING WAS DEVELOPED FOR THE FABRICATION AND INSTALLATION OF A NEW BROW LANDING PLATFORM FOR THE USS PAMPANITO.
2. ALL WELDING SHALL BE IN ACCORDANCE WITH AWS PROCEDURE AND SPECIFICATION. WELDING PREPARATION AND PROCEDURE SHALL BE TO SHIP MANAGER'S SATISFACTION.
3. TEMPLATE ALL WORK FROM SHIP AND EQUIPMENT PRIOR TO INSTALLATIONS.
4. ALL QUANTITIES IN THE LIST OF MATERIALS ARE THE QUANTITIES FOR ONE SHIP.
5. DIMENSIONS ARE IN INCHES.
6. BURRS AND SHARP OR RAGGED EDGES OF EXPOSED MATERIAL SHALL BE REMOVED.
7. AREAS DAMAGED OR DISTURBED BY THE MODIFICATION ON THIS DRAWING SHALL BE REPAIRED, CLEANED, PREPARED AND PAINTED TO MATCH SURROUNDING AREAS.
8. ALL NEW STEEL IN THE WEATHER TO BE COATED WITH MARINE EPOXY PRIMER AND MARINE POLYURETHANE TOP COAT.
9. ADDITIONAL LIFELINE STANCHIONS SHOULD BE ADDED AS NECESSARY FOR VISITOR SAFETY. STANCHIONS AND INSTALLATION METHODS SHOULD MATCH EXISTING LIFELINE STANCHIONS.
10. LOCATIONS OF UNDERDECK STIFFENING STRUCTURE ARE APPROXIMATE, BASED ON SHIP'S DRAWINGS. ALL LOCATIONS SHOULD BE CHECKED FOR INTERFERENCES AND MODIFIED AS NECESSARY TO SUIT AS-BUILT CONDITION.
11. DESIGN FOR BROW GUIDE STANCHIONS CALLS FOR 40" LONG SACRIFICIAL PIPE TO BE BOLTED TO 42" TALL STANCHION. THE BOLTED PIPE SERVES AS THE WEARING SURFACE AGAINST THE BROW, AND CAN BE REPLACED AS NEEDED WITHOUT DAMAGING/INTERFERING WITH PERMANENT STANCHIONS.
12. USE ANTI-SEISE ON BOLTS FOR SACRIFICIAL STANTION ASSEMBLY.
13. IN AREAS WHERE STRUCTURE OR FAIRING IS WASTED OR ANGLES ARE TOO ACUTE TO WELD AROUND A SOLEPLATE SHOULD BE INSTALLED.

MATERIALS LIST (QUANTITY FOR ONE SHIP)

ITEM	QTY	DESCRIPTION	SPECIFICATION	REMARKS
1	27 FT	ANGLE, 2" X 2" X 1/8"	STEEL ASTM A36	
2	68 FT	PLATE, 7.6#	STEEL ASTM A36	
3	134 FT	PLATE, 3/16"	STEEL GRADE A	DIAMOND PLATE
4	14 FT	PIPE, 2 1/2" SCH 40	STEEL ASTM A53	
5	14 FT	PIPE, 1 1/2" SCH 40	STEEL ASTM A53	
6	4 EA	BOLT, SQUARE NECK CARRIAGE, 3/8", LG=6 1/2"	ANSI B18.5	316 STAINLESS STEEL
7	4 EA	NUT, NYLON LOCK, 3/8"		316 STAINLESS STEEL
8	4 EA	WASHER, 3/8"	ANSI B18.2.1	316 STAINLESS STEEL
9	2 EA	PIPE CAP, STEEL, DOMED WELD-ON, 2 1/2"		SHARPE PRODUCTS #9110, OR SIMILAR

REVISIONS


REV	ZONE	DESCRIPTION	BY	DATE	APPD
-	ALL	INITIAL ISSUE SEE GENL NOTE 1			



KEY PLAN 4-A
MAIN DECK
SCALE: 1/2" = 1'-0"

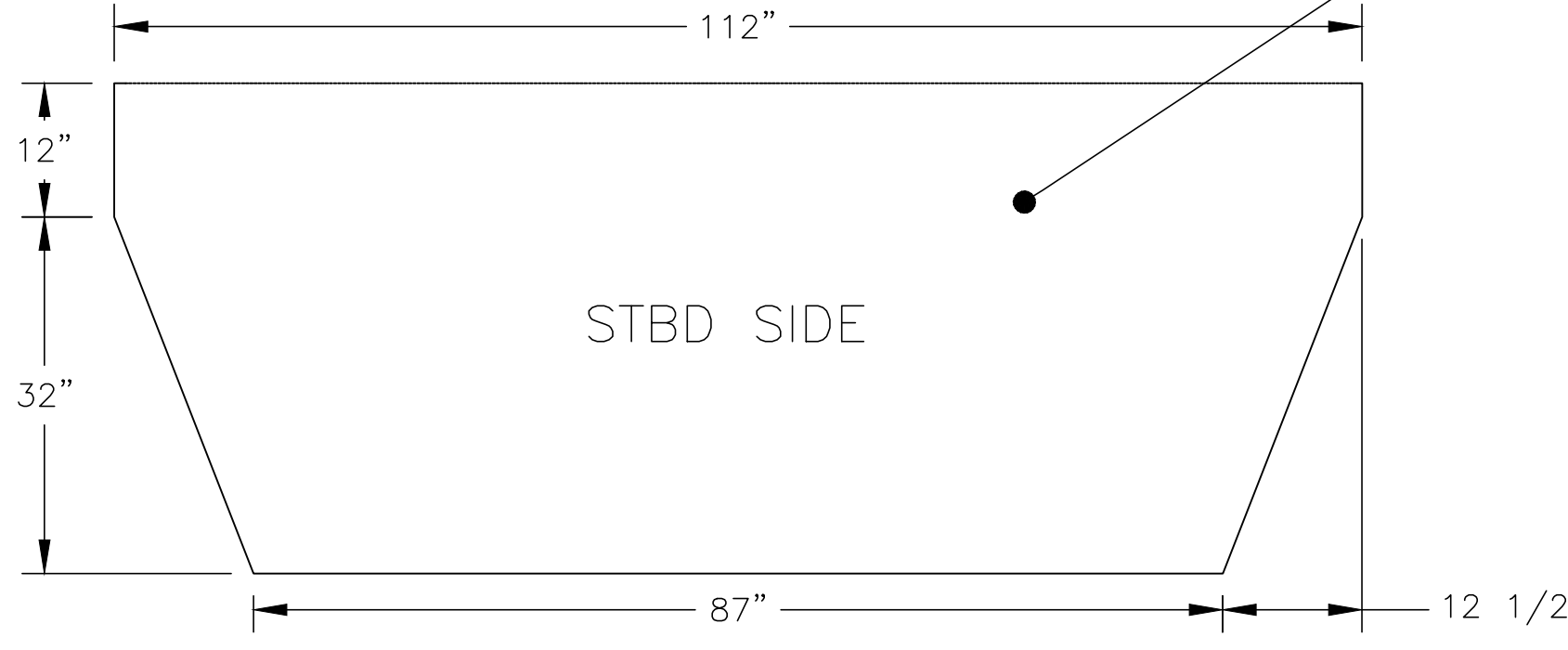
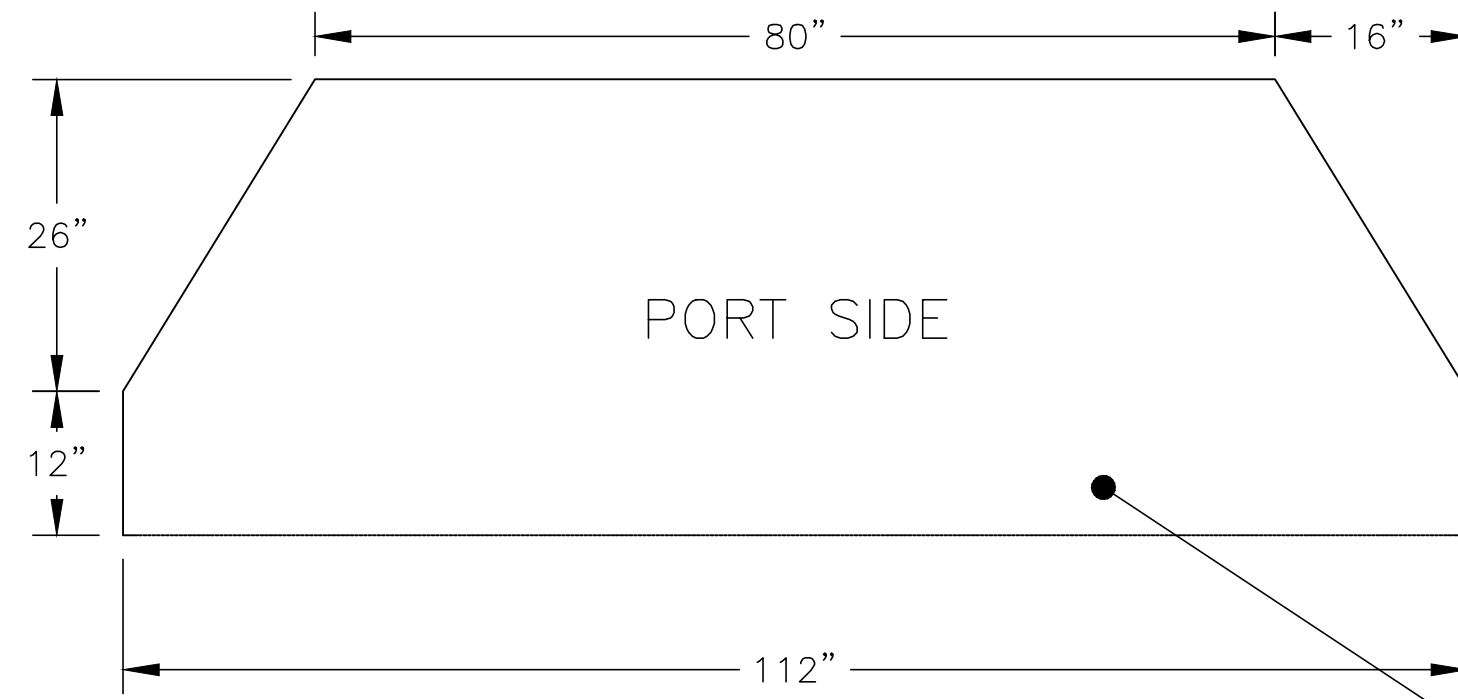
7	BSR MEMO 11/28/16	USS PAMPANITO BROW LANDING PLATFORM PRELIMINARY FINDINGS	—
6	SS 405-S4800-67963	AIR-OIL-WATER & VENT SYSTEMS: PIPING IN SUPERSTRUCTURE AFT OF FRAME NO. 69	4
5	BASIC S44706	OUTBOARD FITTINGS — GENERAL ARRANGEMENT	10
4	SS 398-S1101-68973	SUPERSTRUCTURE — SIDES & MAIN DECK: FRAMES 66 TO 105 INCL.	5
3	SS 395-S8000-69695	AFTER FIVE INCH GUN FIRING CLEARANCES	1
2	SS 395-S1101-69665	SUPERSTRUCTURE FRAMES: 68 TO 79 INCLUSIVE	2
1	SS 381-S0103-68101	BOOKLET OF GENERAL PLANS	—
NO.	DWG. NO.	DWG. TITLE	ALT

REFERENCE

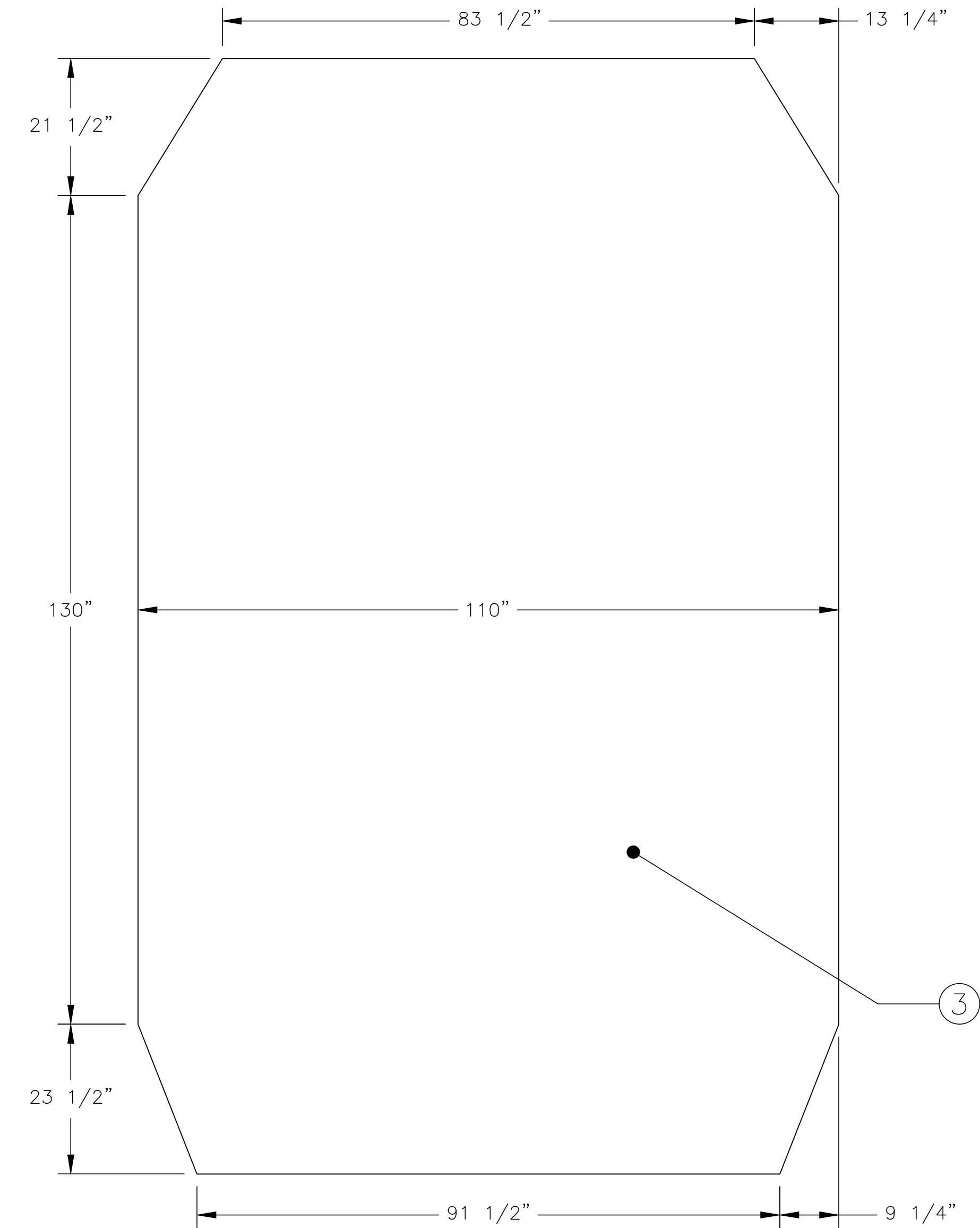
			BRUCE S. ROSENBLATT & ASSOCIATES, LLC NAVAL ARCHITECTS AND MARINE ENGINEERS OAKLAND, CA ARLINGTON, VA NEWPORT NEWS, VA	
	DATE			
APPROVED BY ABS	N/A			
APPROVED BY USCG	N/A			
APPROVED BY HL	N/A	CLASS	BALAO CLASS	
DESIGN AGENT BSR		SHIP	USS PAMPANITO	
BUILDING YARD		TITLE	BROW LANDING PLATFORM	
PROJ. NO.		DWG. NO.	1089.001	
SCALE: AS NOTED			REV. —	DATE: 02/17
			SHEET	1 OF 5

1089.001

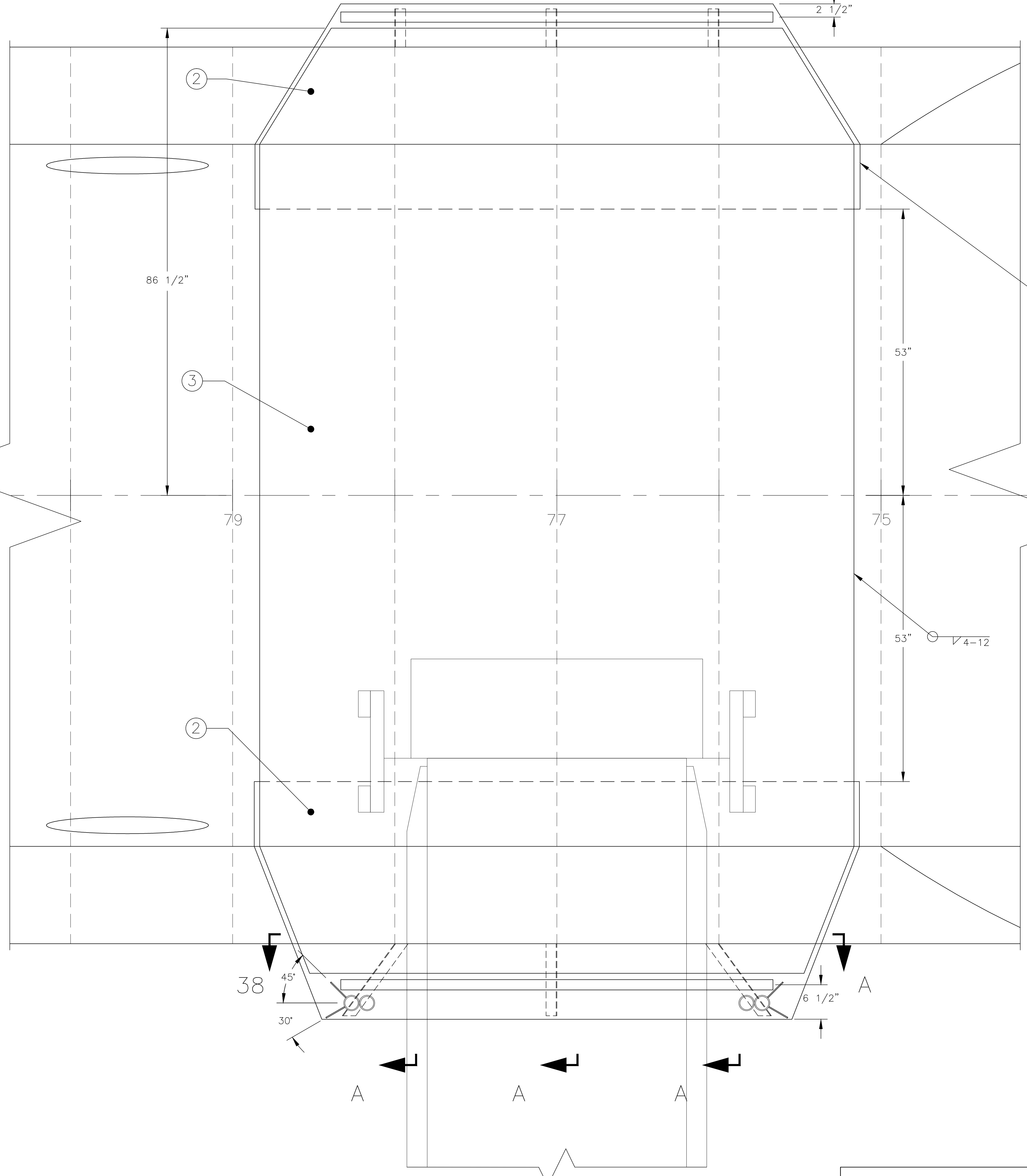
A



DETAIL 15D
STEEL PLATE PLATFORM DIMENSIONS
SCALE: 3/4" = 1'-0"



DETAIL 15A
STEEL DIAMOND PLATE DIMENSIONS
SCALE: 3/4" = 1'-0"



PLAN 11A
BROW LANDING PLATFORM
SCALE: 1 1/4" = 1'-0"

DWG. NO.		REV.		DATE:	
1089.001		—		02/17	
SCALE:		AS NOTED		SHEET 2 OF 5	

24

23

22

21

20

19

18

17

F

E

D

C

B

A

CHOCKS PLACED APPROX. 10"
FROM EACH END OF PIPE,
AND EVERY 10" IN BETWEEN.

1 1/4"

1 1/4"

DETAIL 23A
STOP DETAILS

SCALE: 2'-0"=1'-0"
STBD SIDE, LOOKING AFT
PORT SIDE SIMILAR BUT OPPOSITE

FOR BROW STOPPER
SEE DETAIL 23-A

TYP

TYP

SECTION 19A
FRAME 76

SCALE: 1"=1'-0"
LOOKING AFT

DWG. NO.		REV.		DATE:	
1089.001		—		02/17	
SCALE:		1/2"=1'-0"		SHEET 3 OF 5	

