

GENERAL NOTES

1. THIS DRAWING WAS DEVELOPED FOR ACCOMPLISHMENT OF MAJOR MAINTENANCE AVAILABILITY BASED ON SHIPCHECK OF USCGC DURABLE (WMEC 628).
2. THIS DRAWING WAS DEVELOPED IN ACCORDANCE WITH THE GUIDANCE SPECIFICATIONS FOR THE 210 FOOT WMEC MAJOR MAINTENANCE AVAILABILITY (MMA).
3. EXCEPT WHERE OTHERWISE NOTED OR APPROVED BY THE COAST GUARD, THE EFFECTIVE DATE OF FEDERAL OR MILITARY SPECIFICATIONS, PUBLICATIONS AND STANDARD/TYPE DRAWINGS AND REVISIONS OR CHANGES THERETO SHALL BE THE EFFECTIVE DATE OF NAVSEA S9AA0-AB-60S-010/GSO. LATER SPECIFICATION REVISIONS MAY BE USED PROVIDED THAT THEY MEET THE INTENT AND INTERFACE REQUIREMENTS OF THE SPECIFICATION INVOKED FOR THE MAJOR MAINTENANCE AVAILABILITY.
4. ENGINEERING DATA SUPPORTING THIS DRAWING IS NOT REQUIRED.
5. THIS DRAWING SUPERSEDES AND CANCELS DRAWING NUMBER 628 WMEC 0103-6.

LEGEND

ES-	ESCAPE SCUTTLE
RWTH-	RAISED WATERTIGHT HATCH
WRTT-	WATERTIGHT
ROAWTH-	RAISED QUICK ACTING WATERTIGHT HATCH
FQAWT-	FLUSH QUICK ACTING WATERTIGHT
QAWT-	QUICK ACTING WATERTIGHT
IL-	INCLINED LADDER
CL-	CENTER LINE
VL-	VERTICAL LADDER
OT-	OIL TIGHT
CVK-	CENTER LINE VERTICAL KEEL
AP-	AFT PERPENDICULAR
FP-	FORWARD PERPENDICULAR
FW-	FRESH WATER
P/S-	PORT AND STARBOARD

CHARACTERISTICS

LENGTH (OVERALL)	210'-6"
LENGTH (ON 10'-6" WL)	200'-0"
BEAM (MOLDED)	34'-0"
DEPTH TO MAIN DECK	19'-6"
DISPLACEMENT AT 10'-6" WL	978.3 LT
HP TOTAL	5000
SPEED SUSTAINED	18 KNOTS
CRUISING RANGE (15 KNOTS)	5123 MI
FUEL CAP 95% FULL	48,444 GAL
FRESH WATER CAP 100% FULL	11,462 GAL
ACCOMMODATIONS	BERTHS
OFFICERS	12
CPO	8
CREW	66
TOTAL	86

REVISIONS

REV/ZONE	DESCRIPTION	BY	DATE	APPROVED
----------	-------------	----	------	----------

NOT APPLICABLE									
----------------	--	--	--	--	--	--	--	--	--

REV	WORK ITEM NUMBER	WT GP	WT (LBS)	I R AL OR XR	VCB REF BL	LCC REF MP	F OR A	TCB REF CL	P S OR O	VAL BY
3	WMEC 628									
2	WMEC 628									
1	WMEC 628									

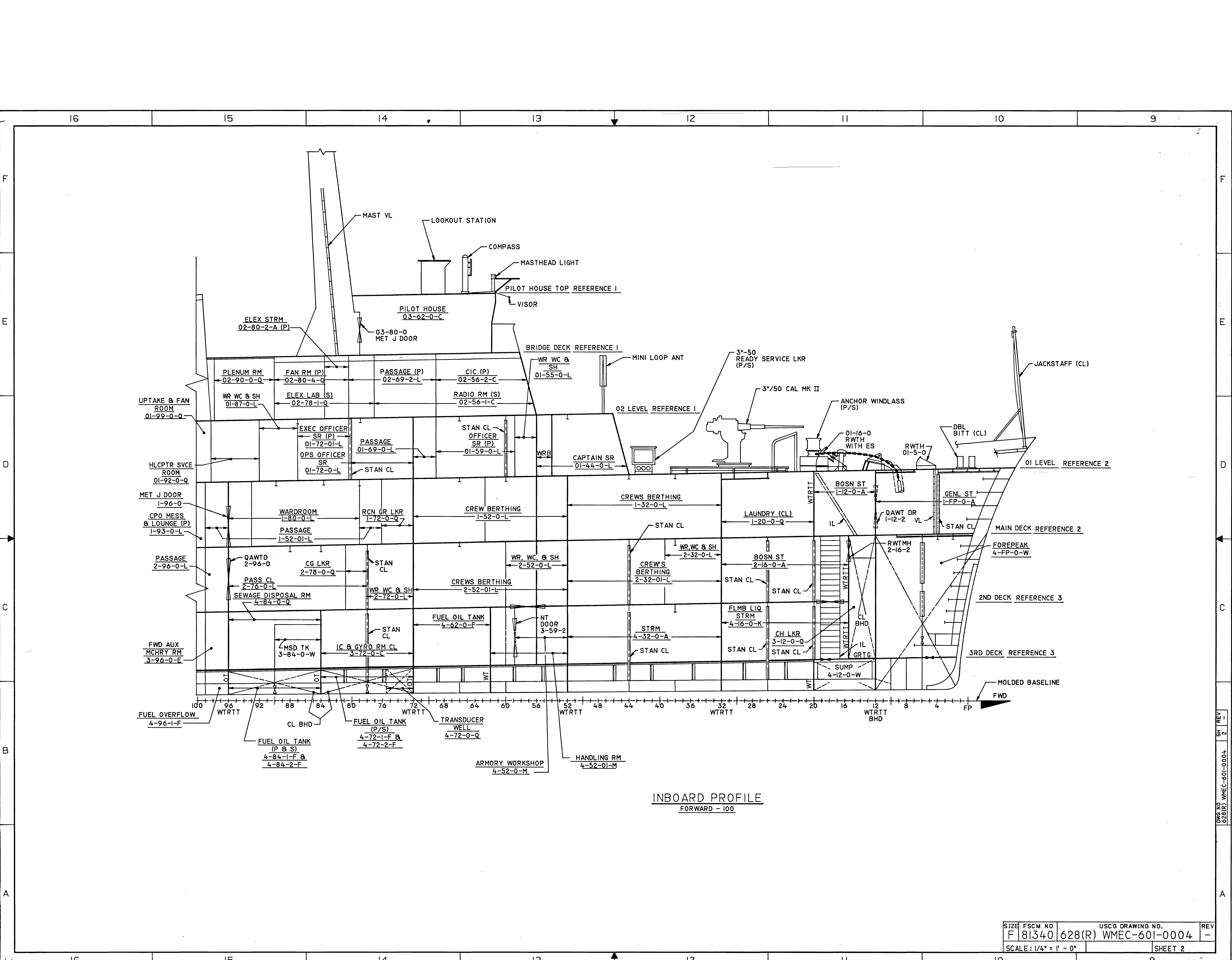
WEIGHT CONTROL DATA
 LEVERS IN FEET TO THE NEAREST TENTH OF A FOOT
 USE SEPARATE LINES FOR EACH WT GRP. S/A, REV. WT INSTL, WT RMV
 I=INSTALL R=REMOVE XI=LOAD ITEM INSTALLED XR=LOAD ITEM REMOVED
 F=FRWD A=AFT P=PORT S=STBD O=C

NO	HULL	TITLE	IDENT
3	WMEC 628	GENERAL ARRANGEMENT SECOND AND THIRD DECK	628(R) WMEC-601-0003
2	WMEC 628	GENERAL ARRANGEMENT MAIN DECK AND 01 LEVEL	628(R) WMEC-601-0002
1	WMEC 628	GENERAL ARRANGEMENT 02 LEVEL AND BRIDGE DECK	628(R) WMEC-601-0001

CONTRACT NO. N00024-85-H-8134
 COLONNA'S SHIPYARD
 PREPARED: C. THOMPSON DATE 8/88
 CHECKED: M. ANTONIACCI 9/88
 ENGINEER: R. MILLER 9/88
 APPROVED: [Signature] 3/1/89
 AUTHORITY: 451-10-001 N00024-85-H-8134

U.S. COAST GUARD HQTRS WASHINGTON DC 20593
 NAVAL ENGINEERING DIVISION
 210 FT WMEC "B" CLASS
 MAJOR MAINTENANCE AVAILABILITY
 INBOARD PROFILE
 APPROVED CHIEF, NAVAL ENGINEERING DIVISION DATE
 CHIEF, MAINTENANCE BR SIZE FSCM NO 81340 628(R) WMEC-601-0004
 SCALE: 1/4" = 1' - 0" SHEET 1 OF 3

REVISION STATUS OF SHEETS	SHIP	REV	SHIPCK BY	DT	SHIP APPLICABILITY
1	2	3			

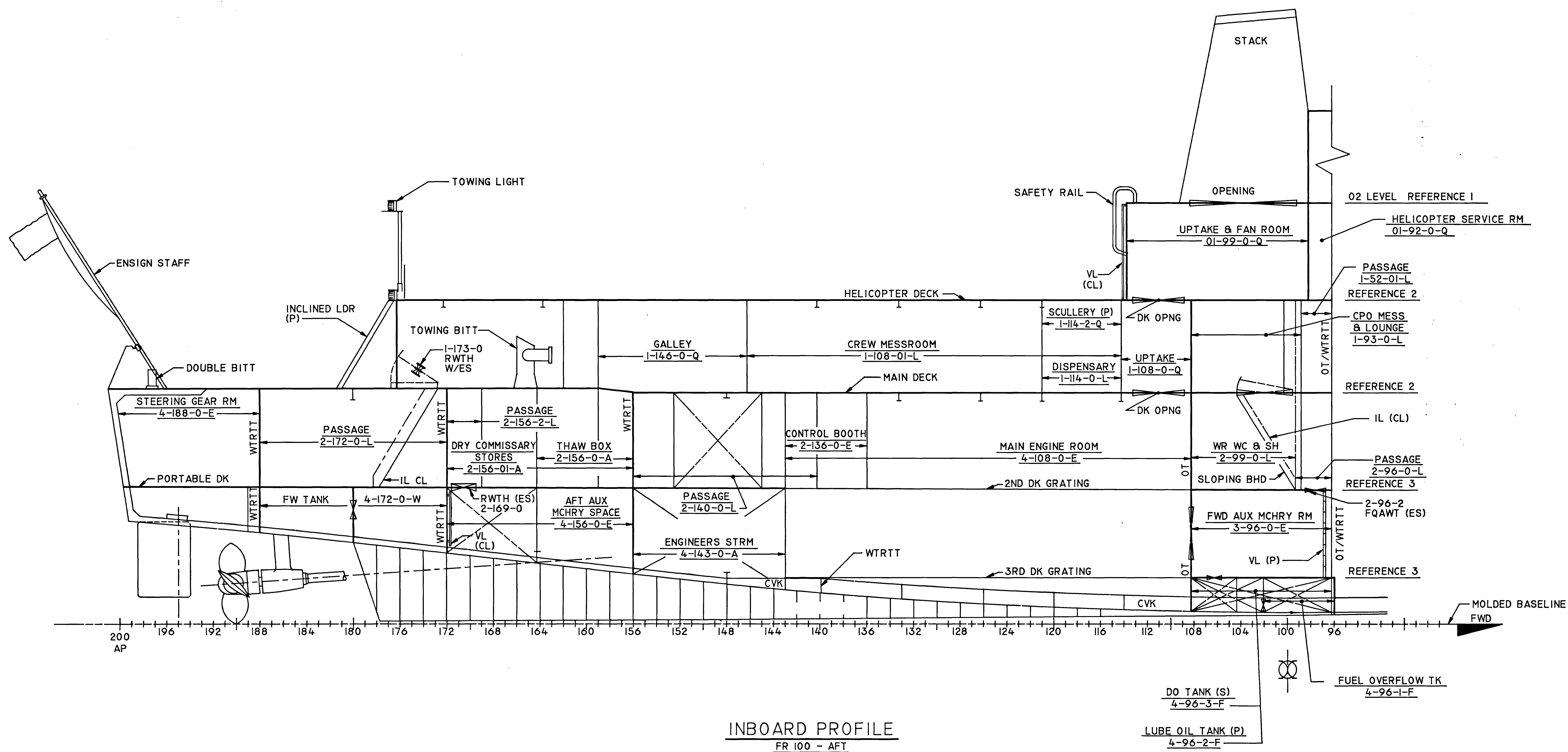


INBOARD PROFILE
FORWARD - 100

SIZE	FSCM NO	USCG DRAWING NO.	REV
F 81340	628(R)	WMEC-601-0004	-
SCALE: 1/4" = 1' - 0"			SHEET 2

SH REV 1
 SH REV 2
 DWG NO 628(R) WMEC-601-0004

24 23 22 21 20 19 18 17



SIZE	FSCM NO	USCG DRAWING NO.	REV
F	81340	628(R) WMEC-601-0004	-
SCALE: 1/4" = 1'-0"			SHEET 3

24 23 22 21 20 19 18 17

DWG NO 628(R) WMEC-601-0004 SH REV 1

GENERAL NOTES

1. THIS DRAWING WAS DEVELOPED FOR ACCOMPLISHMENT OF MAJOR MAINTENANCE AVAILABILITY BASED ON SHIPCHECK OF USCGC DURABLE (WMEC 628).
2. THIS DRAWING WAS DEVELOPED IN ACCORDANCE WITH THE GUIDANCE SPECIFICATIONS FOR THE 210 FOOT WMEC MAJOR MAINTENANCE AVAILABILITY (MMA).
3. EXCEPT WHERE OTHERWISE NOTED OR APPROVED BY THE COAST GUARD, THE EFFECTIVE DATE OF FEDERAL OR MILITARY SPECIFICATIONS, PUBLICATIONS AND STANDARD TYPE DRAWINGS AND REVISIONS OR CHANGES THERETO SHALL BE THE EFFECTIVE DATE OF NAVSEA 93AA0-AB-605-010. LATER SPECIFICATION REVISIONS MAY BE USED PROVIDED THAT THEY MEET THE INTENT AND INTERFACE REQUIREMENTS OF THE SPECIFICATION INVOKED FOR THE MAJOR MAINTENANCE AVAILABILITY.
4. ENGINEERING DATA SUPPORTING THIS DRAWING IS NOT REQUIRED.
5. THIS DRAWING SUPERSEDES AND CANCELS DRAWING NO 628 WPC 0103-7.

LEGEND

FP FOWARD PERPENDICULAR
 AP AFT PERPENDICULAR
 LBP LENGTH BETWEEN PERPENDICULAR
 DWL DESIGNED WATERLINE
 S STARBOARD
 P PORT

CHARACTERISTICS

LENGTH (OVERALL) 210' - 6"
 LENGTH (ON 10' - 6" WL) 200' - 0"
 BEAM (MOLDED) 34' - 0"
 DEPTH TO MAIN DECK 19' - 6"
 DISPLACEMENT AT 10' - 6" WL 978.3 LT
 HP (TOTAL) 5000
 SPEED (SUSTAINED) 18 KNOTS
 CRUISING RANGE (15 KNOTS) 5123 MI
 FUEL CAP - 95% FULL 48,444 GALLONS
 FRESH WATER CAP - 100% FULL 11,462 GALLONS
 ACCOMMODATIONS
 BERTHS
 OFFICERS 12
 CPO 8
 CREW 66
 TOTAL 86

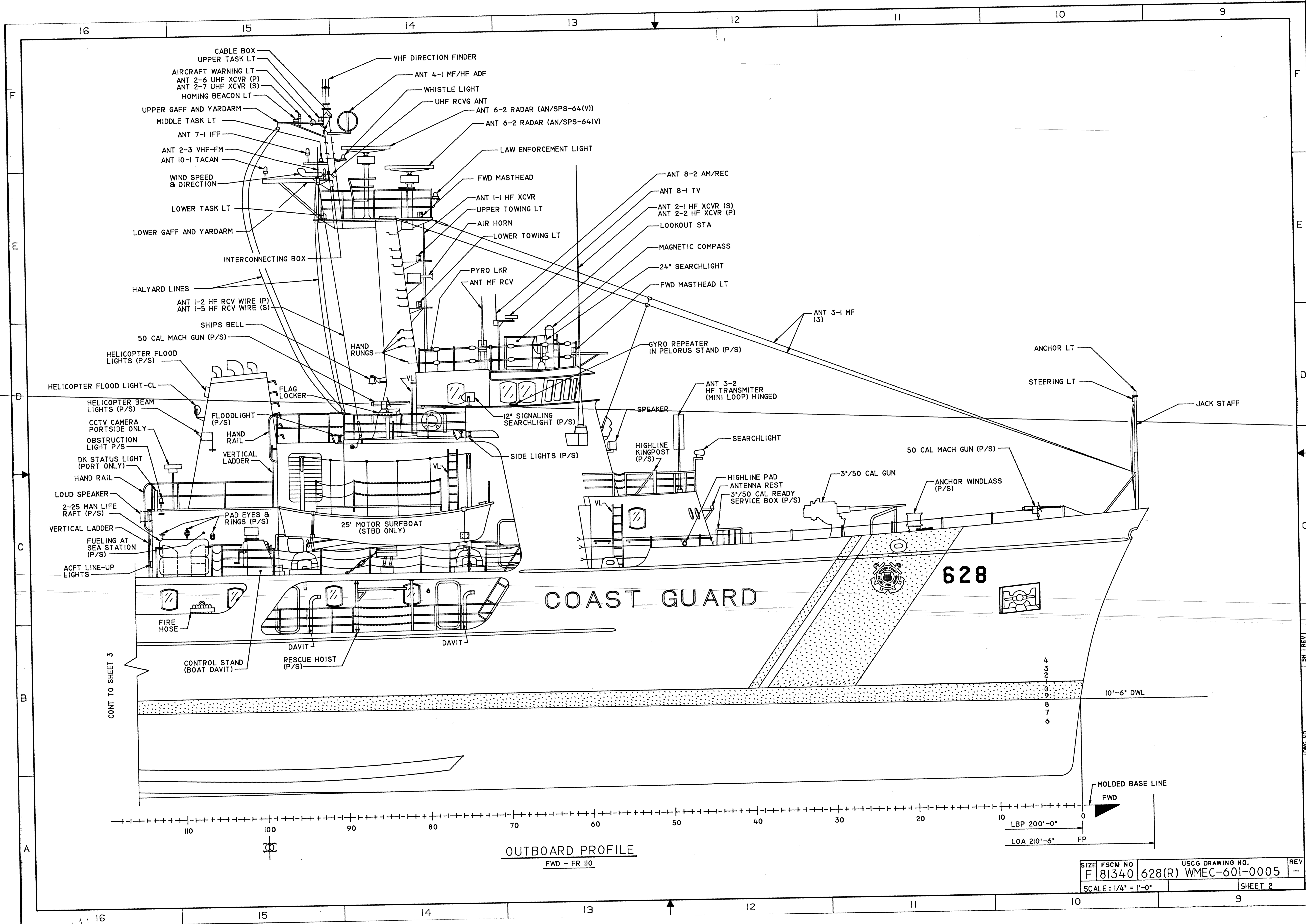
REVISIONS

REV	ZONE	DESCRIPTION	BY	DATE	APPROVED
-----	------	-------------	----	------	----------

REV	WORK ITEM NUMBER	WT GP	WT (LBS)	H X I OR XR	YCG REF BL	LCG REF MP	F OR A	TCG REF CL	P S OR O	VAL BY
NOT APPLICABLE										
WEIGHT CONTROL DATA										
LEVERS IN FEET TO THE NEAREST TENTH OF A FOOT USE SEPARATE LINES FOR EACH WT GRP S/A REV WT INSTL WT RMV I=INSTALL R=REMOVE X=LOAD ITEM INSTALLED XR=LOAD ITEM REMOVED F=FWD A=AFT P=PORT S=STBD O=C										
U.S. COAST GUARD HDQTRS WASHINGTON DC 20593					NAVAL ENGINEERING DIVISION					
210 FT WMEC					"B" CLASS					
MAJOR MAINTENANCE AVAILABILITY					OUTBOARD PROFILE					
CHIEF, DESIGN BR					APPROVED					
PROJECT OFFICER					CHIEF, NAVAL ENGINEERING DIVISION					
CHIEF, MAINTENANCE BR					DATE					
REVISION STATUS OF SHEETS					SHIP REV SHIPCK BY DT					
SHIP APPLICABILITY					AUTHORITY					
N0024-85-4-8134					CONTRACT NO. N0024-85-H-8134					
					COLONNA'S SHIPYARD					
					PREPARED: C. THOMPSON DATE 11/88					
					CHECKED: B. THORNHILL 11/88					
					ENGINEER: A. MILLER 11/88					
					APPROVED: [Signature] 5/24/89					
					SCALE: 1/4" = 1'-0"					
					SHEET 1 OF 3					

NO	HULL	TITLE	IDENT
1		REFERENCES	
2			
3			
4			
5			
6			
7			
8			

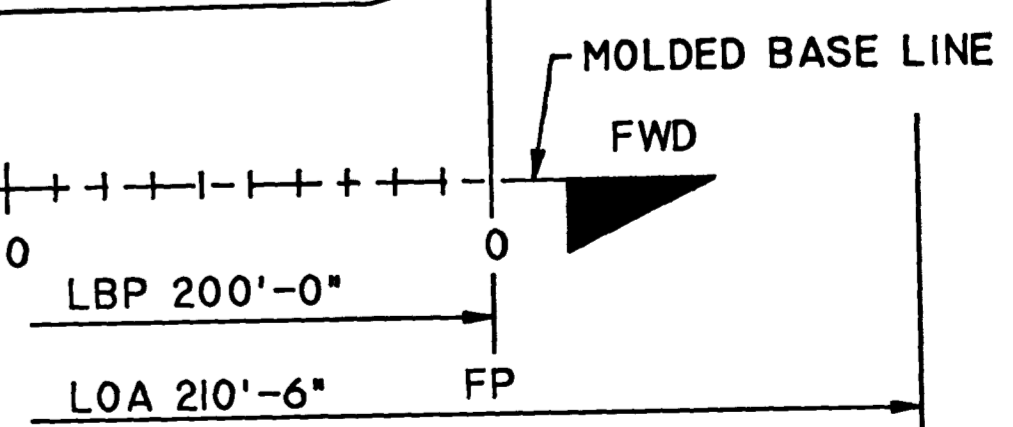
WMEC-601-0005



COAST GUARD

628

OUTBOARD PROFILE
FWD - FR 110



SIZE	FSCM NO	USCG DRAWING NO.	REV
F	81340	628(R) WMEC-601-0005	-
SCALE: 1/4" = 1'-0"		SHEET 2	

DWG NO 1628(R) WMEC-601-0005

24 23 22 21 20 19 18 17

F

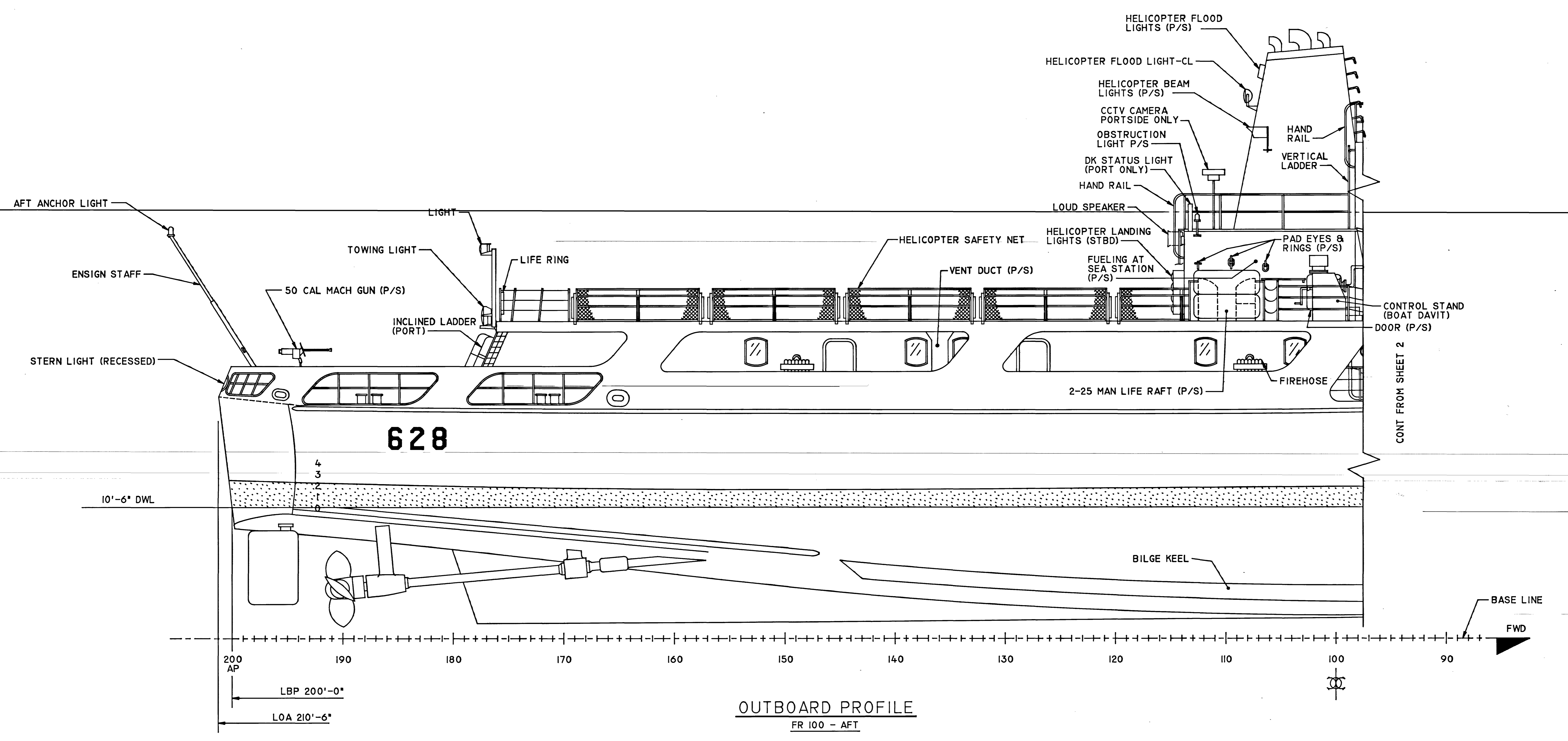
E

D

C

B

A



OUTBOARD PROFILE
FR 100 - AFT

CONT FROM SHEET 2

SIZE	FSCM NO	USCG DRAWING NO.	REV
F	81340	628(R) WMEC-601-0005	-
SCALE: 1/4" = 1'-0"			SHEET 3

24 23 22 21 20 19 18 17